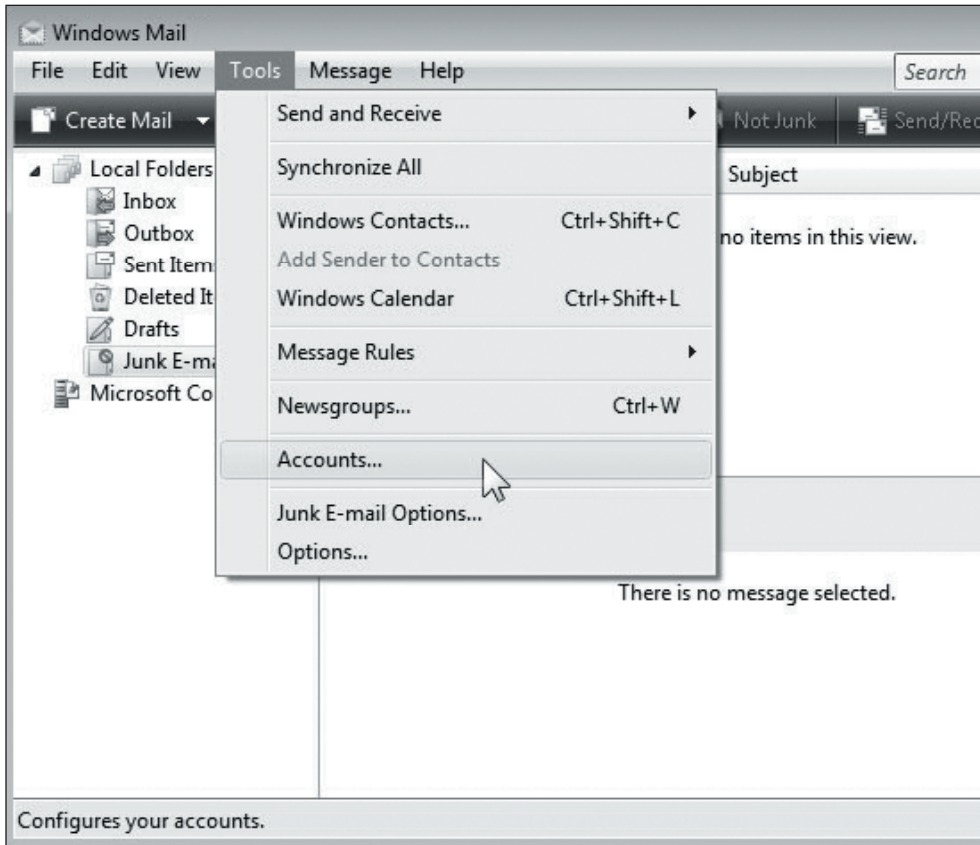


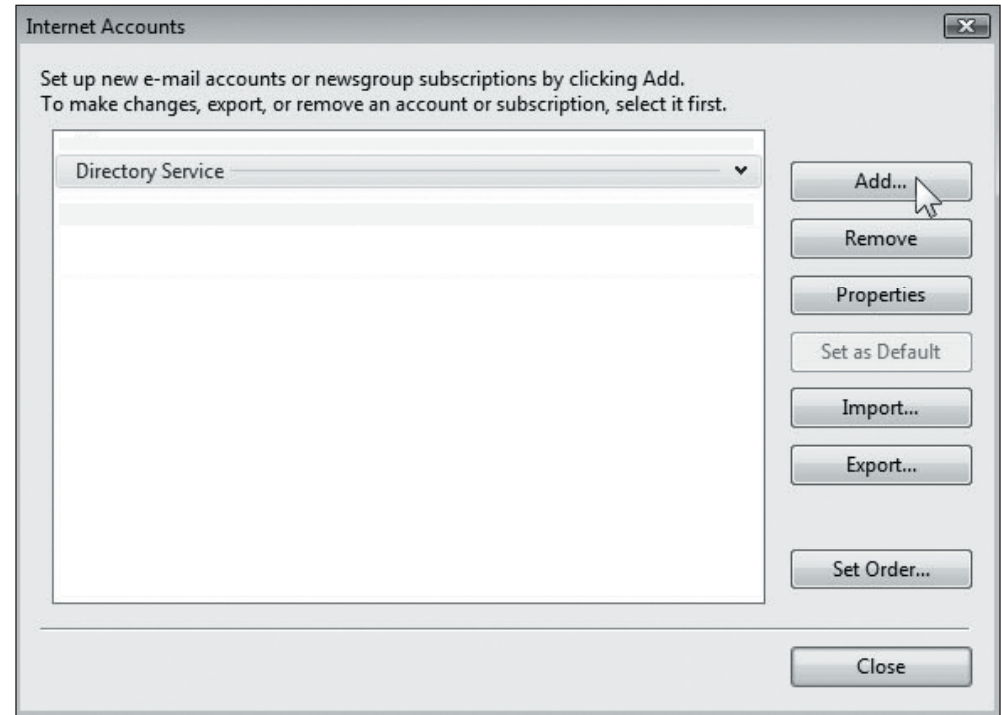
Setting Up Windows Mail

POP EMAIL ACCOUNT SETUP

1. Open Windows Mail and select **Tools** -> **Accounts**.



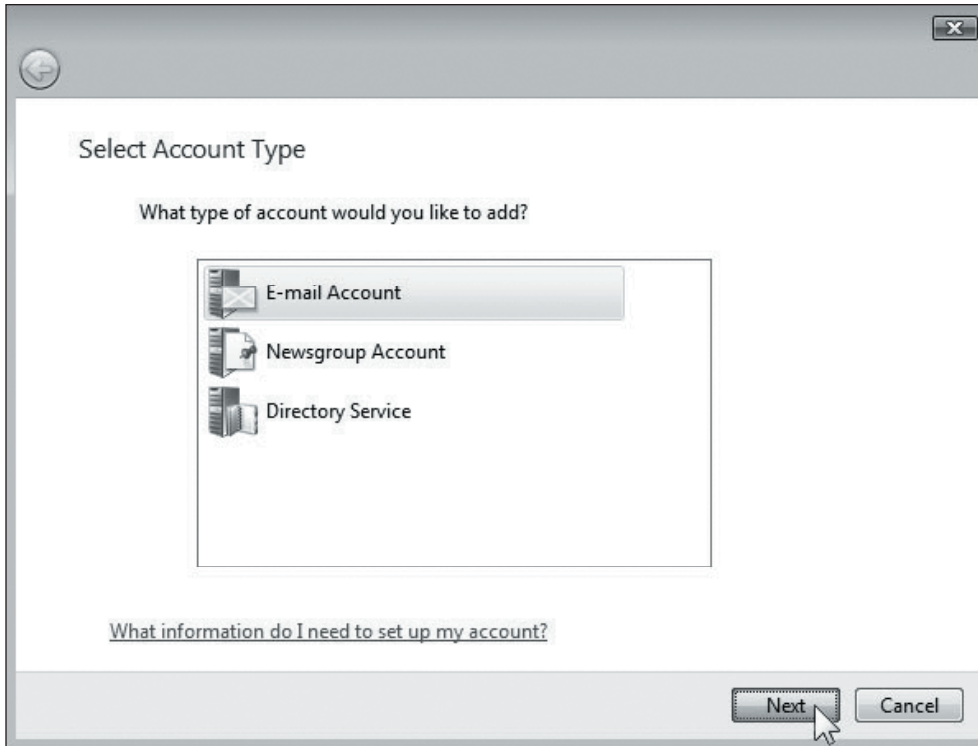
2. Click on the **Add** button to set up a new e-mail account.



Setting Up Windows Mail

POP EMAIL ACCOUNT SETUP (cont.)

3. Select **E-mail Account** and click **Next**.



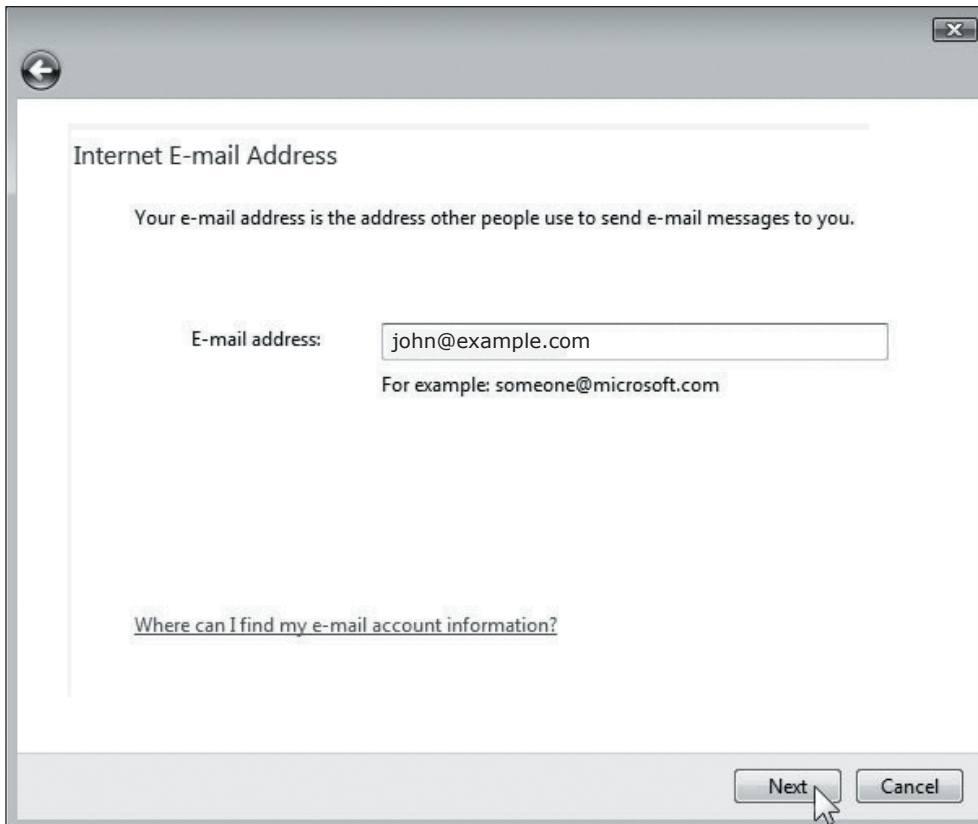
4. Type in your name as you want it to appear on outgoing messages and then click **Next**.



Setting Up Windows Mail

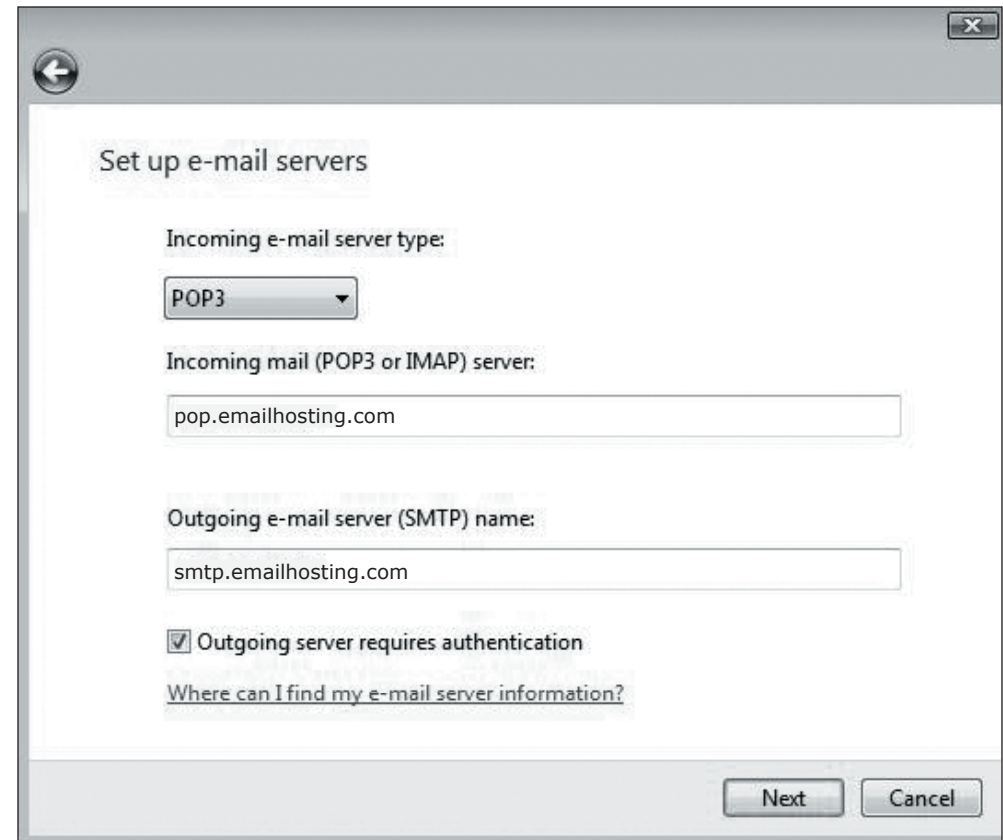
POP EMAIL ACCOUNT SETUP (cont.)

5. Type your email address and then click **Next**.



6. Enter Emailhosting's server information.

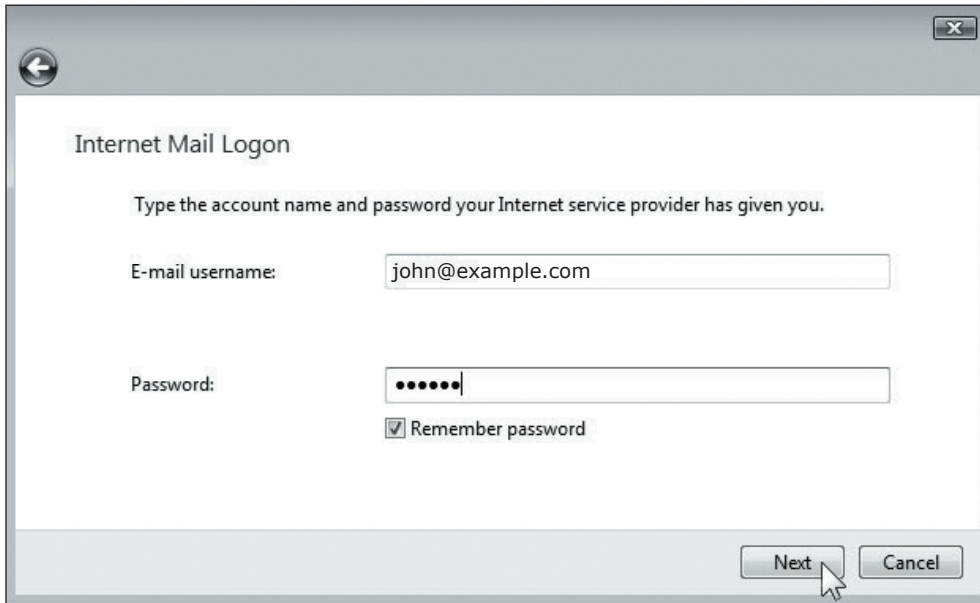
- Incoming e-mail server type: **POP3**
- **Incoming mail (POP3 or IMAP) server:** pop.emailhosting.com
- **Outgoing e-mail server (SMTP) name:** smtp.emailhosting.com
- **Check** the box next to "**Outgoing server requires authentication**" and then click **Next**.



Setting Up Windows Mail

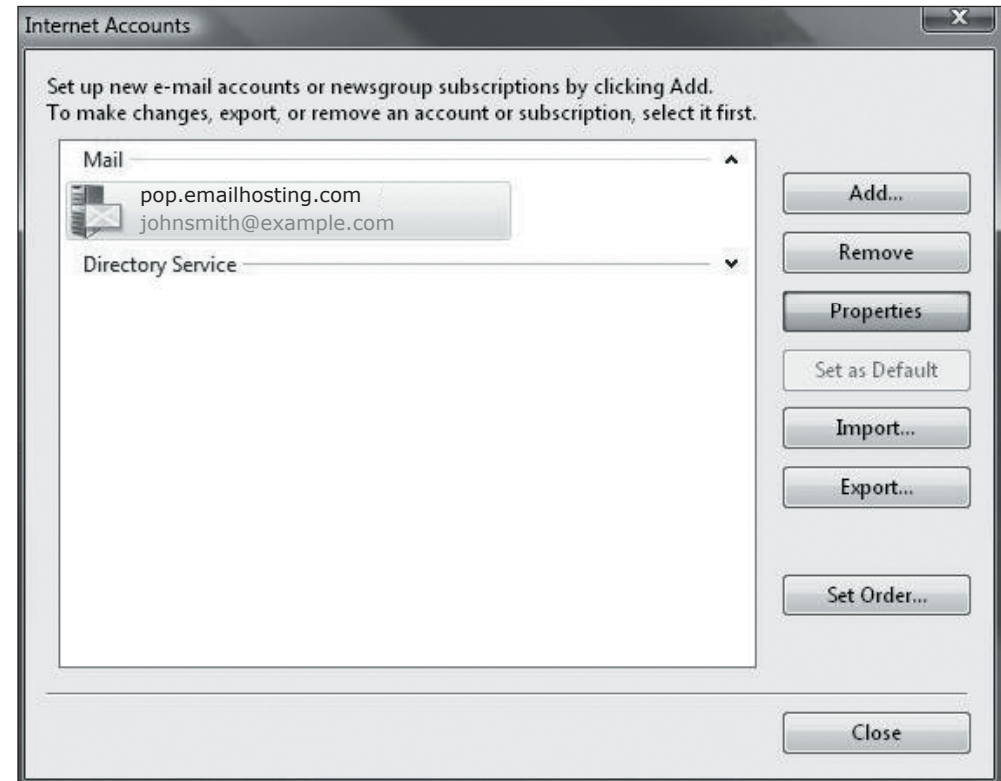
POP EMAIL ACCOUNT SETUP (cont.)

7. Enter your Emailhosting account information.
 - **Email username:** your full email address
 - **Password:** your password
8. Click **Next** and **Finish**.



The 'Internet Mail Logon' dialog box is shown. It has a title bar with a back arrow and a close button. The main area contains the text 'Internet Mail Logon' and 'Type the account name and password your Internet service provider has given you.' Below this are two input fields: 'E-mail username:' with the text 'john@example.com' and 'Password:' with a masked password '.....'. There is a checked checkbox for 'Remember password'. At the bottom right are 'Next' and 'Cancel' buttons. A mouse cursor is pointing at the 'Next' button.


9. You should be in the **Internet Accounts** window now. Click on your account and then click on the **Properties** button.

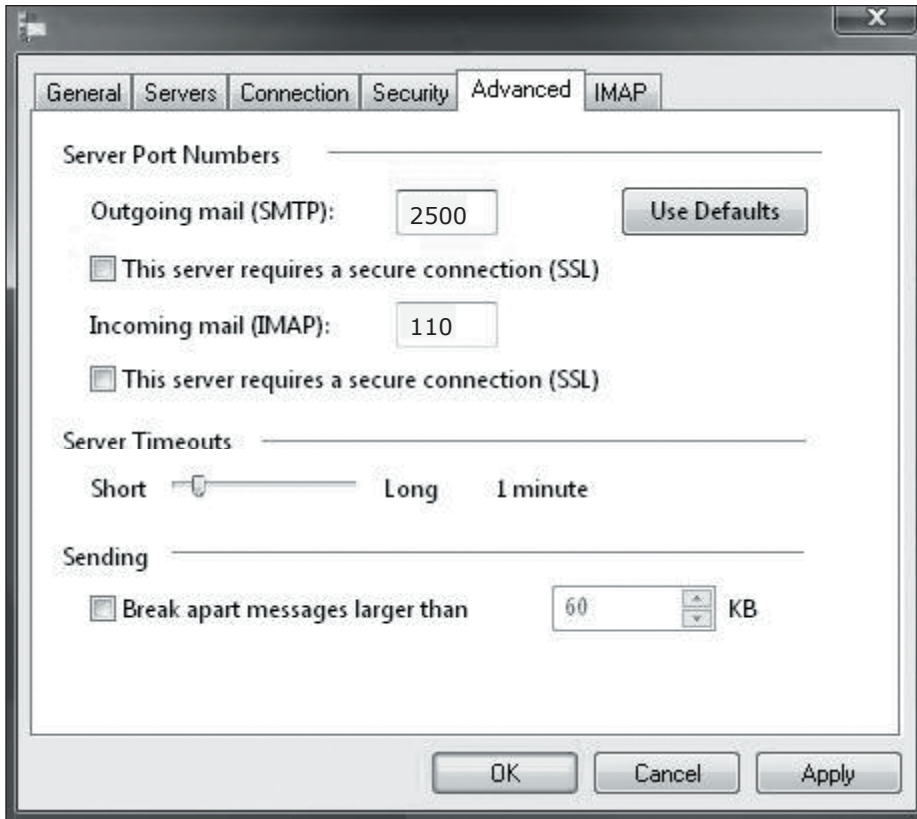


The 'Internet Accounts' dialog box is shown. It has a title bar with a close button. The main area contains the text 'Set up new e-mail accounts or newsgroup subscriptions by clicking Add. To make changes, export, or remove an account or subscription, select it first.' Below this are two list boxes: 'Mail' and 'Directory Service'. The 'Mail' list box contains one entry: 'pop.emailhosting.com' with a sub-entry 'johnsmith@example.com'. To the right of the list boxes are several buttons: 'Add...', 'Remove', 'Properties', 'Set as Default', 'Import...', 'Export...', 'Set Order...', and 'Close'.

Setting Up Windows Mail

POP EMAIL ACCOUNT SETUP (cont.)

10. Click on the **Advanced** tab. Change the Outgoing mail (SMTP) port number from 25 to **2500**.
11. Click **OK** and then **Close** to complete the setup. 



NOTE: As a courtesy, we provide information about how to use certain third-party products but we do not endorse or directly support third-party products, and we are not responsible for the functions or reliability of such products. Windows Mail® is a registered trademark of Microsoft Corporation in the United States and/or other countries. All rights reserved.